



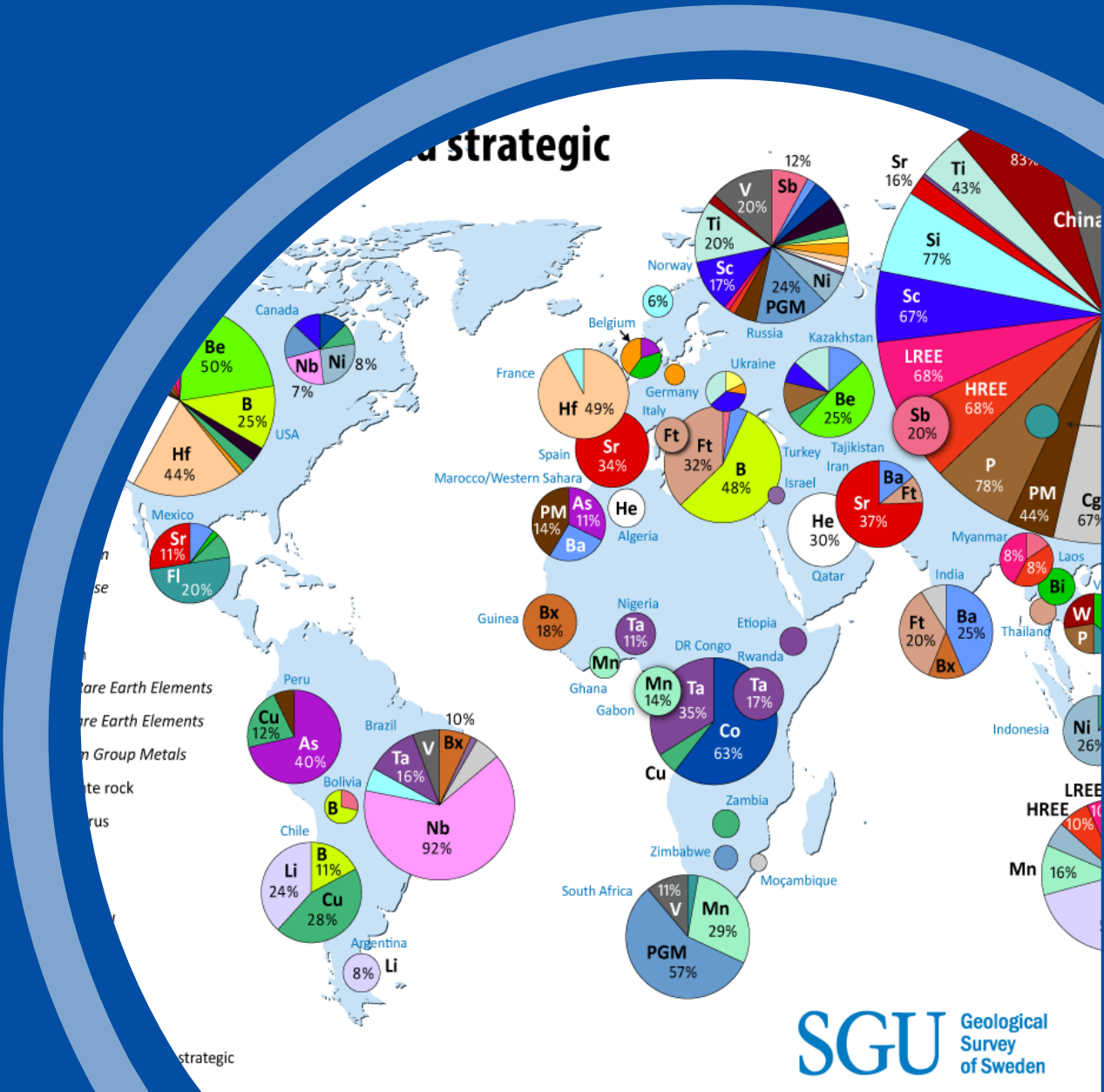
RawMaterials

Connecting matters

Critical Raw Materials Facility



Co-funded by the
European Union



*The CRM Facility, co-led by EIT RawMaterials and EIT InnoEnergy, **spans 16 partner countries** across Africa, Latin America, Asia, Southeastern Europe, and Greenland, with the objective of integrating CRM value chains to enhance Europe's strategic autonomy and the mandate to build long-term partnerships while securing reliable CRM supplies*



Objective

Benefits for European Community

- Develop mid-to-downstream CRM value chains
- Promote **sustainable practices** and local value-added opportunities
- Support **training programs** to equip professionals with CRM expertise
- Align CRM projects with **European industry needs** and integration strategies
- Facilitate B2B matchmaking and joint ventures to foster collaboration

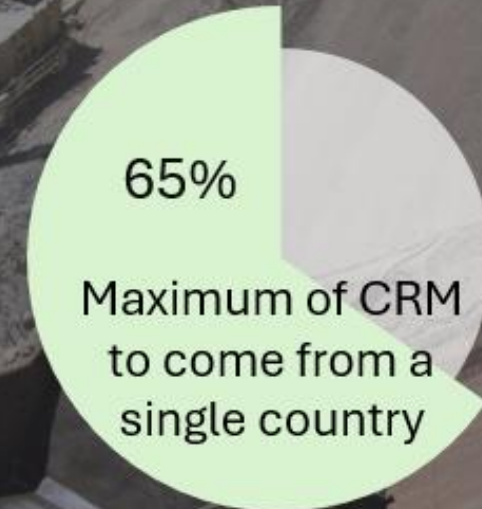
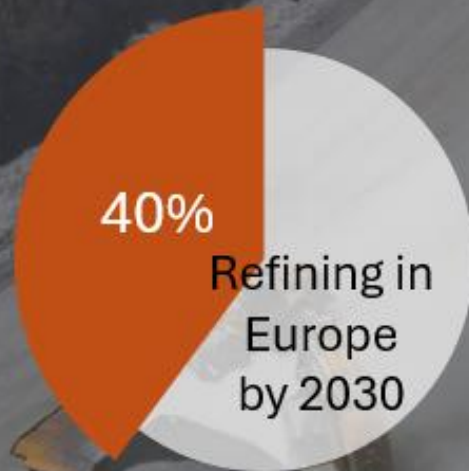


Business Missions

Main activities planned for 2025

- **South Africa:** Investment event at Indaba (February), EU-South Africa Summit (March)
- **Chile:** Business Mission (March/April)
- **Kazakhstan:** Business Mission (June)
- **DRC:** DRC Mining Week (June)
- **Zambia:** Lobito Corridor Summit (Q3, tentative)
- **Argentina:** Business Mission (Q3/Q4, tentative)
- **Uzbekistan:** Business Mission (Q4, tentative)
- **Latin America:** EU-CELAC Summit (Q3/Q4 2026)

B2B opportunities in the frame of CRM Facility



Where does the missing % come from?
Is Europe always the best place to refine?
Which Countries Offer Supply Diversification Opportunities?
What can the EU offer to these CRM Projects?

CRM Facility is the Technical Assistance Tool to manage these issues

CRM Facility is the Technical Assistance Tool to manage these issues

How will the CRM-Facility work?



Scout for CRM projects in partner countries

Assess the projects technically (technology, team, resource, business case, permitting...)

Work with the projects to support their financeability

Identify Off-takers/investors for the project

Transfer skills and technology in an ESG based framework

Integrate the projects into EU Value Chains

How partners can link with the CRM Facility project

Events and Networking

Use intelligence to scout, identify and develop business cases, leading to integration of CRM value chains

Partners will be informed and invited to join

Activities include:

- Participation in key mining events
- Participation/coordination of EU business missions*
- B2B networking between EU industries and partnership countries*

* may include site visits



CRM-FACILITY

BACKGROUND

- 16 Partner countries, 2 KICs (EIT Raw Materials + EIT InnoEnergy)
- Integration of CRM value-chains
- Need for a coordinated approach (EC, MS, EUR Industry)
- Obligations:
 - (1) Integrate CRM Value-chain
 - (2) Build long-term partnerships

HOW WE BRING IN EUROPEAN INDUSTRY

- Both KICs maintain a huge network of key industry players (incl. Finance)
- Intimate knowledge of our industry partners
- What CRM projects make sense for them?
- What type of „CRM integration“ makes sense for them?

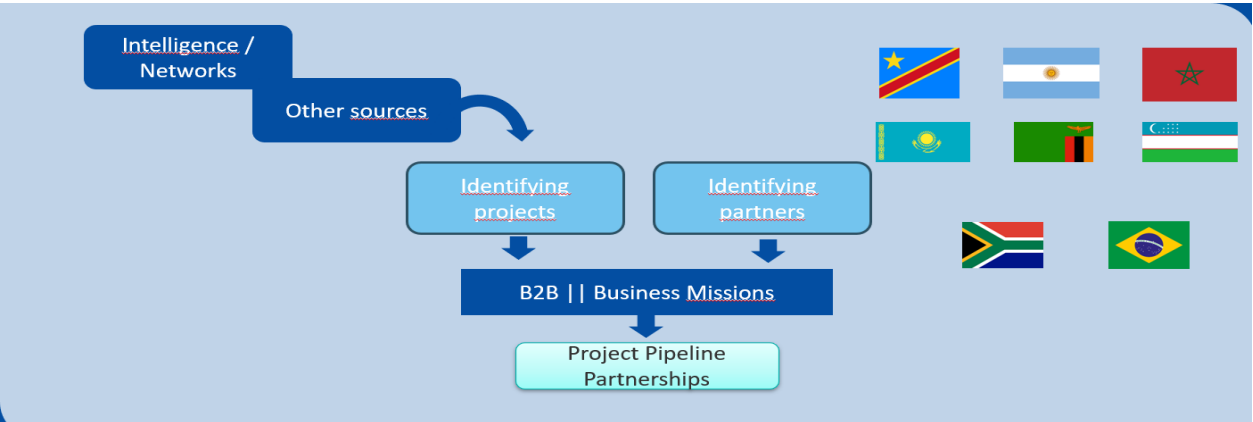
MAIN ACTIVITIES PLANNED FOR 2025 (subject to change)

- South Africa: Investment event planned at Indaba February
- South Africa: EU-South Africa Summit March
- Chile: Business Mission March/ April
- Kazakstan: Business Mission June
- DRC: DRC Mining Week June
- Zambia: Lobito Corridor Summit Q3 (to be confirmed)
- Argentina: Business Mission Q3/ Q4 2025 (to be confirmed)
- Uzbekistan: Business Mission Q4 2025 (to be confirmed)
- Latin America: EU-CELAC Summit Q3/Q4 2026



Short listed countries for 2024 :

- DRC
- Tanzania
- Argentina,
- Brazil
- Uzbekistan
- South Africa



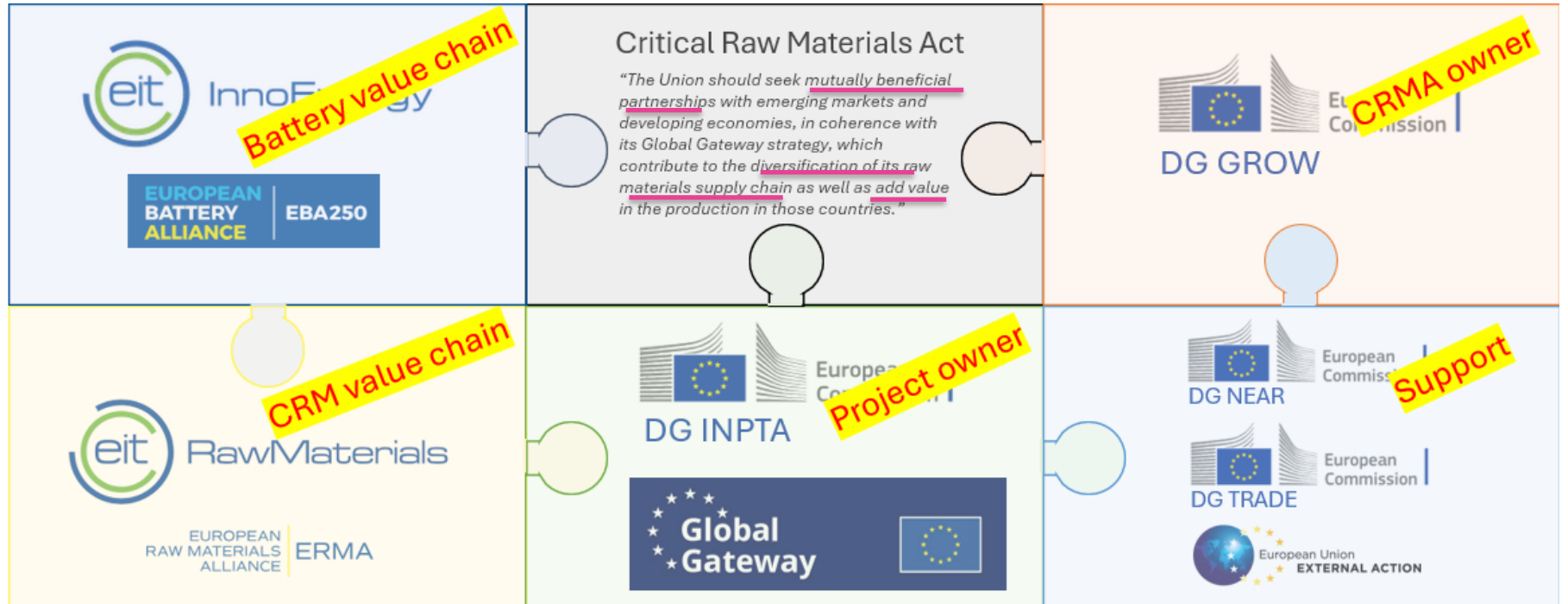
Background

The CRM-Facility is a key vehicle to implement the CRMA, specifically as far as CRM supply from outside Europe is concerned.

It does so by being integrated within the core EC organizations that lead the CRMA – and by integrating the European industry web



Objective: Integration of CRM value-chains to secure a reliable supply of critical and strategic raw materials to the EU





Co-funded by the
European Union

eitrawmaterials.eu



EITRawMaterials