



RawMaterials

Connecting matters

EIT RawMaterials

Who we are. What we offer. Our impact.



Co-funded by the
European Union



WHAT WE DO AND HOW WE ARE

- ❑ Providing services and funding to universities, research center, industries
- ❑ Born in 2015
- ❑ After almost 10 years we have more than 300 partners all over Europe
- ❑ The European Commission decided that EIT RawMaterials has to manage these initiatives:
 1. ERMA (European Raw Material Alliance)
 2. HEI (Higher Education Institutions) Initiative
 3. Girls Go Circular
 4. CRM (Critical Raw Materials) Facility

KNOWLEDGE & INNOVATION

We support and accelerate innovation, connecting policy, industry and research to secure Europe's raw materials supply chain.

ACCESS TO FINANCE & FUNDRAISING

We provide strategic public and private funding solutions, invest and support innovative start-ups, scale-ups and help bring projects to market.

NETWORK & PARTNERSHIP

We connect the largest and most active knowledge and innovation community across the raw materials value chain.

HUMAN CAPITAL & WORKFORCE SOLUTIONS

We partner with universities and industry to skill workforces to meet today's challenges, and educate talent to unlock tomorrow's opportunities.

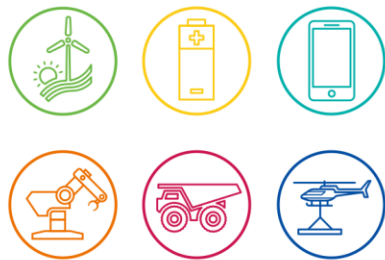
EIT RawMaterials at a Glance

World's Leading
Partner Network

300+
MEMBERS

400+
START-UPS

Entire Value
Chain Coverage

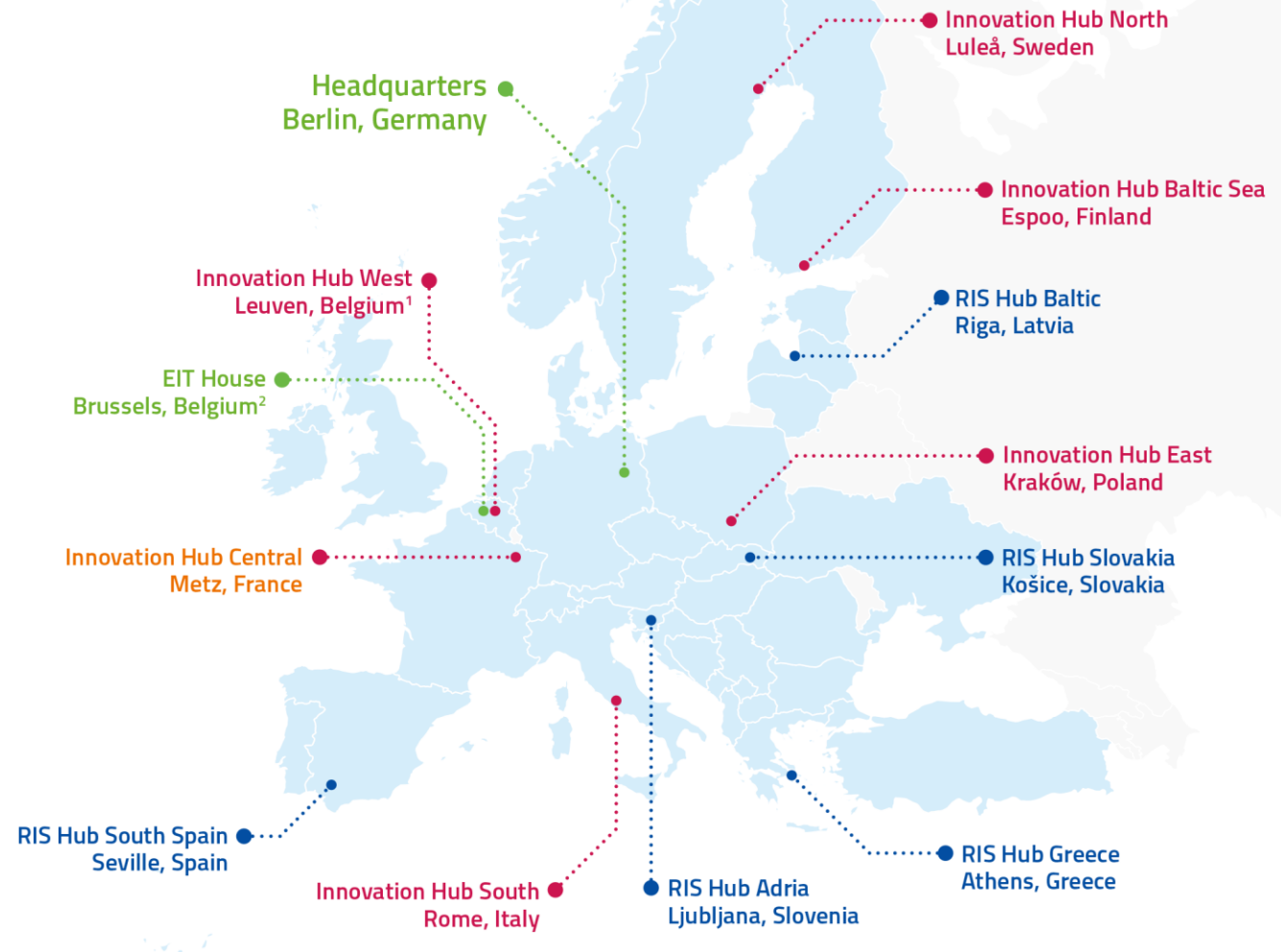


Higher Education
Initiative

>350
UNIVERSITIES

European
Raw Materials Alliance

>750
PARTNERS



Strong Partnership



Strategic Objectives



SECURING RAW MATERIALS SUPPLY

Support EU exploration activities

Grow European mining sector

Comply with ESG standards

northvolt

KELIBER FLSMIDTH

Metso:Outotec

Widfind



DESIGNING MATERIALS SOLUTIONS

Develop advanced materials

Support circular product design

Develop material efficiency and
lightweighting solutions

STELLANTIS

sinieris VICK

Höganäs

BETOLAR



CLOSING MATERIALS LOOPS

Recovery of critical raw materials

Increase recyclability

Waste utilization

eramET BASF
We create chemistry

MagREEsources

suez

■ Revised fee model to match size of opportunity

PROPOSED MEMBERSHIP MODEL

PROJECT PARTNER:

10k EUR (< 100k EUR funding)

ASSOCIATE PARTNER:

30k EUR (< 300k EUR funding) – SME / RTO / University

50k EUR (< 500k EUR funding) – Large Industry

CORE PARTNER:

80k EUR (> 300k EUR funding, no ceiling) – SME / RTO / University

100k EUR (> 500k EUR funding, no ceiling) – Large Industry

■ Key takeaways: lower fees, increased opportunities

- SMEs and startups pay a lower membership fee at Associate & Core Partner levels
- RTOs and universities pay a lower membership fee at Core Partner level
- Large industry partners can receive higher funding at Associate Partner level – no need to upgrade to Core Partner level if 300-500k EUR funding p.a.
- Loyalty discounts for long-standing Core Partners and those who prolong their membership

EIT RawMaterials: Services & Value proposition

ACCESS TO FINANCE

EIT RM innovation and education funding
EIT RM funding of Start-ups and SMEs
Access to external grants, loans and equity financing

ACCESS TO KNOWLEDGE

Access to Start-up
Open Innovation for Industrial Challenges
Expert Forum
Business Intelligence and knowledge report
InfoCenter including knowledge on innovation within network

ACCESS TO NETWORK

World's largest community in the raw materials sector (>300 KIC partners; >700 ERMA partners)
B2B and Matchmaking
Major events in the sector in Europe:, Expert Forum RawMaterials Summit, Partner/Stakeholder Day

ACCESS TO TALENT

Active **Alumni Network** with 700+ Raw Materials Alumni all over Europe
Graduates from leading **Masters Programs and PhD** Schools in Europe
Industrial upskilling and reskilling through professional training & customized courses

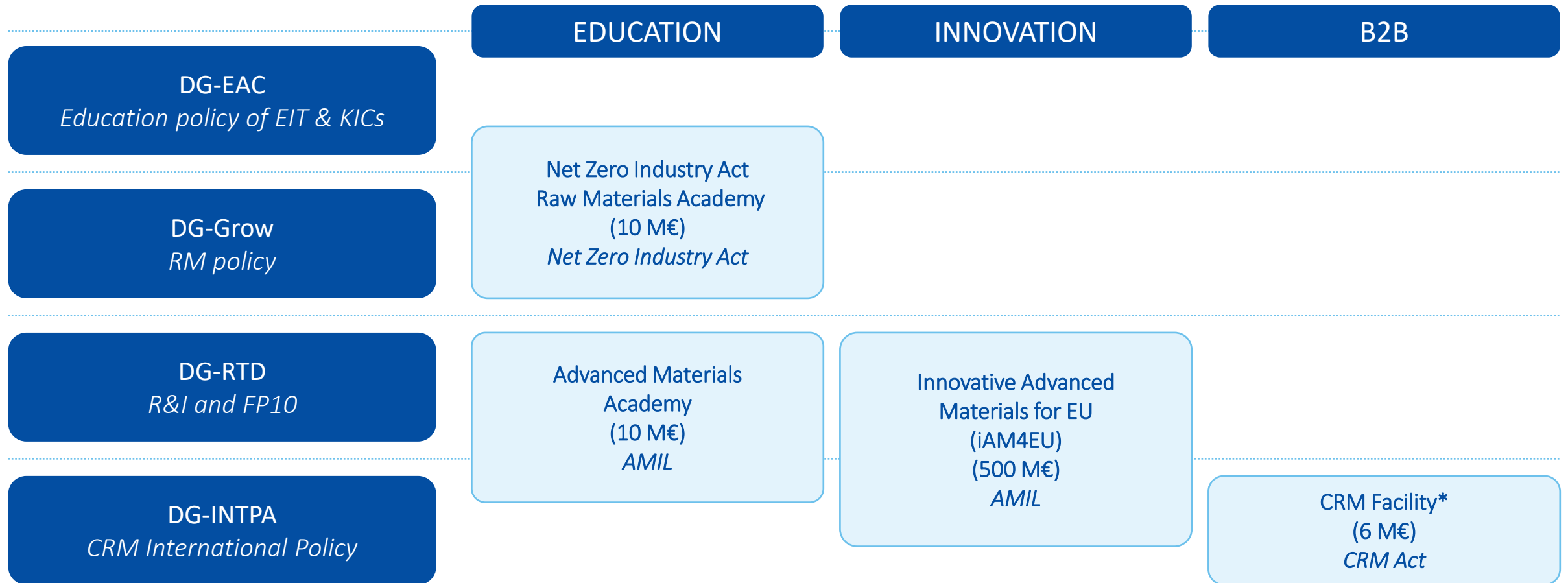
100m EUR Call – sources of financing

#	Source	Max. Amount
1.	EIT top-up funding 2024	14.4m EUR
2.	EIT top-up funding 2025	20.0m EUR
3.	EIT top-up funding 2026*	10.0m EUR
4.	EIT underspending 2024-26	>6.0m EUR
5.	Membership fee reserves	10.0m EUR
6.	Project co-funding	30.0m EUR
7.	Alternative funding Academies**	10.0m EUR
8.	Total	100.4m EUR

** Estimation.*

*** European Raw Materials Academy, funded by DG Grow with up to 3.5m EUR; Advanced Materials Academy, funded by DG RTD with up to 10.0m EUR (both gross budgets along assumed 3y duration and for all partners involved).*

New alternative funding opportunities



AMIL = Advanced Materials for Industrial Leadership initiative | * = Contribution Agreement signed between DG-INTPA and EIT



Co-funded by the
European Union

eitrawmaterials.eu



EITRawMaterials