



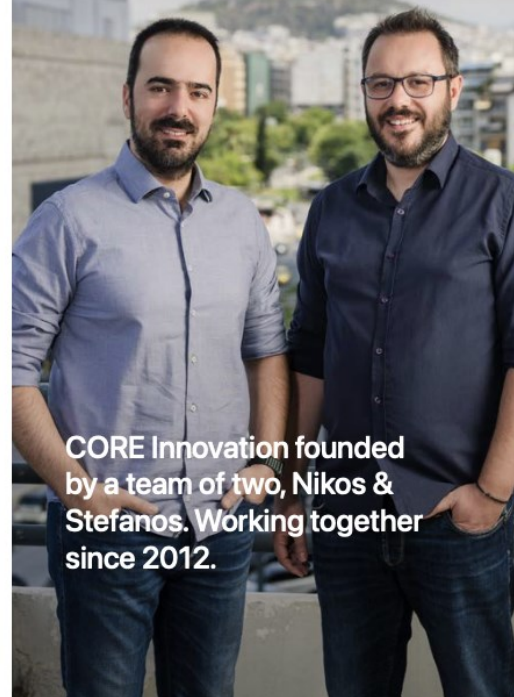
Stefanos Kokkorikos

Founder, Managing Partner

CORE Group

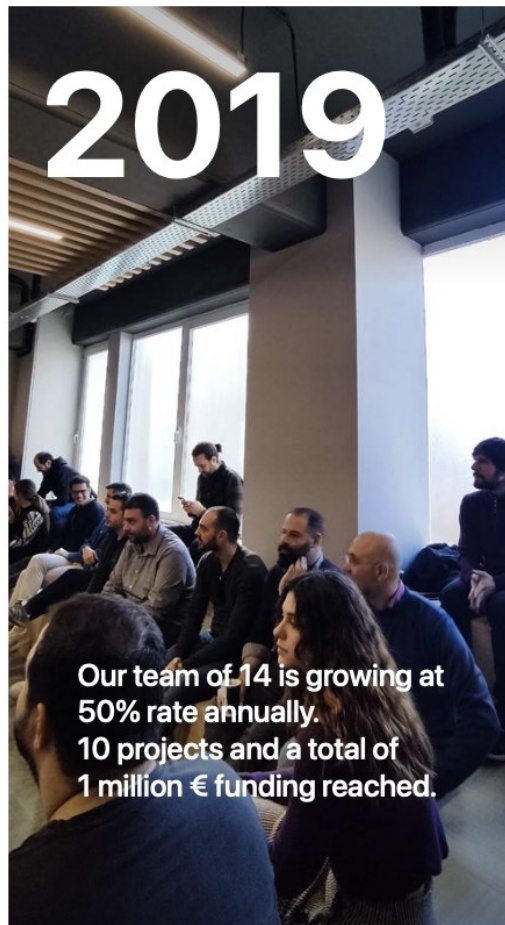
AI Unearthed: The Digital Makeover of Mining Operations

2016



CORE Innovation founded by a team of two, Nikos & Stefanos. Working together since 2012.

2019



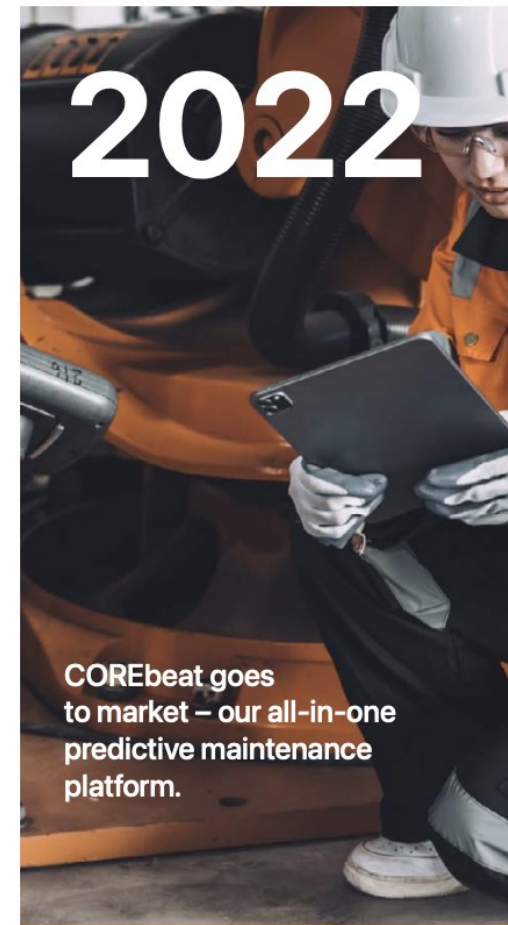
Our team of 14 is growing at 50% rate annually. 10 projects and a total of 1 million € funding reached.

2021



The CORE Innovation Centre is founded to co-create and develop Industry 4.0 solutions, connecting industry and academia.

2022



COREbeat goes to market – our all-in-one predictive maintenance platform.



Founded in
2016

260+
Partners across Europe

40+
Projects

H2020+ HORIZON EUROPE
NSRF

12M+ €
EU Funding



**What are the
challenges
the mines are
facing today?**



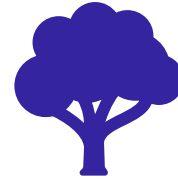
Future-proof challenges in the mining industry



Safety concerns



Operational
Efficiency



Environmental
Impact



Sustainability
Pressure

Adoption of innovation in mining





Enhanced Safety and Risk Management

AI-powered monitoring systems can predict equipment failures and mitigate risks by enabling **smart maintenance**

Autonomous vehicles and drones can perform hazardous tasks, significantly reducing workplace accidents and ensuring miner safety.



Increased Operational Efficiency



Machine learning algorithms analyse data from sensors and equipment to optimise mining operations

increased **resource recovery**

reduced **energy consumption**

minimized **downtime**



Environmental Impact Reduction



PRECISE RESOURCE MAPPING AND EXTRACTION
TECHNIQUES, RESULTING IN MINIMAL
ENVIRONMENTAL DISRUPTION



MONITOR ENVIRONMENTAL DATA TO ENSURE
COMPLIANCE WITH REGULATIONS AND SUPPORT
SUSTAINABLE PRACTICES LIKE REFORESTATION
AND WATER MANAGEMENT.



Supply Chain and Market Predictability

enabling better forecasting

reducing stockpiles

ensuring a more efficient route to
market

**aligning production with market
needs and price optimization**

what is digital transformation?

Digital Transformation

- Data acquisition – Sensors
- Connectivity
- Cloud & edge computing
- Data analytics
- AI-based insights and decision support
- Smart visualisation
- Digital twin



Digital Mine

Physical Mine



A real case – A flagship project



European Mining in the Green and Digital Era



Co-funded by
the European Union



The Mastermine consortium

Partners
South Africa
Cyprus
Finland
Germany
Greece
Italy
Poland
Spain

Use cases

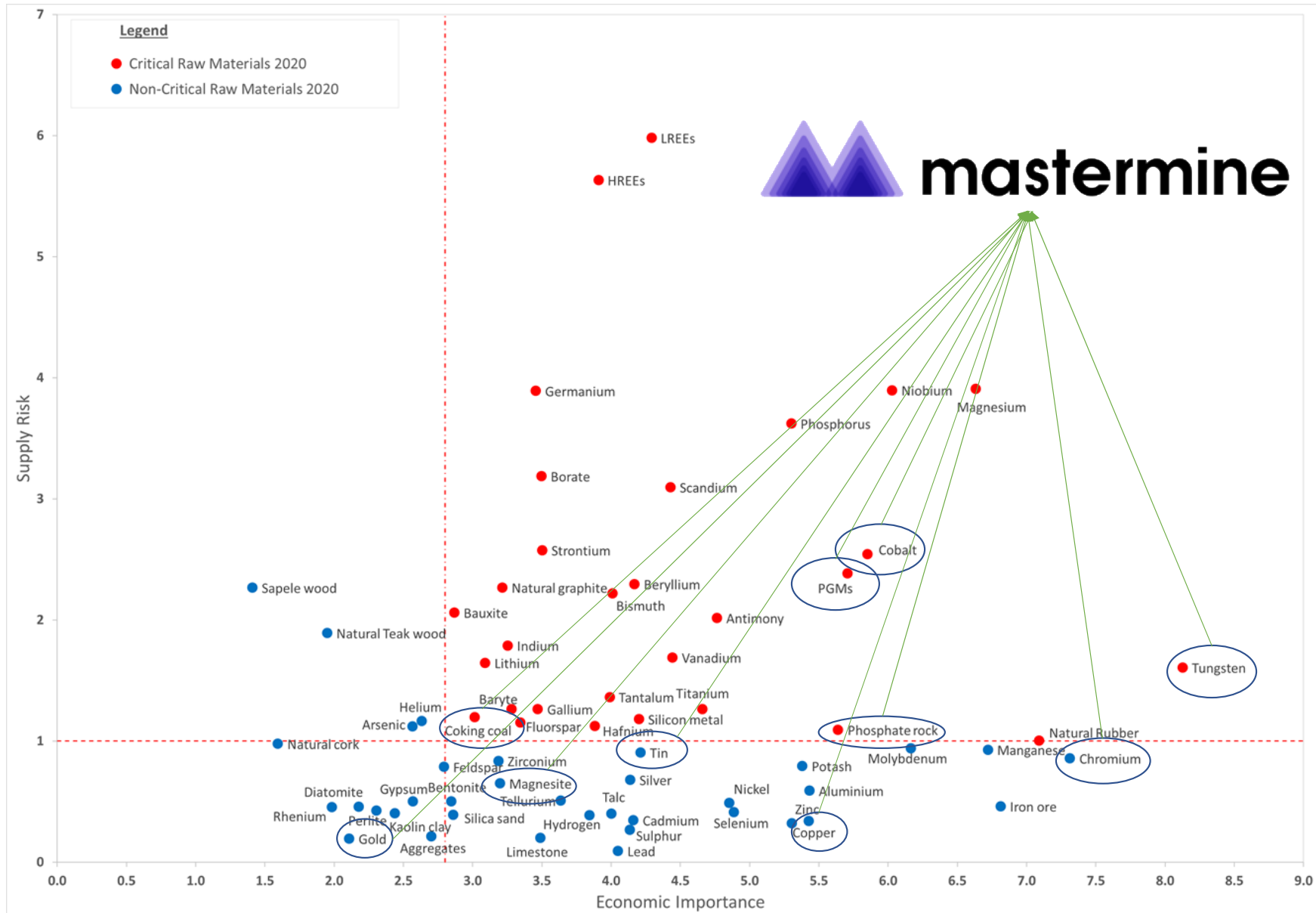
- 1
- 2
- 3
- 4
- 5
- 6



MASTERMINE aspires to become the go-to ecosystem for mines that envision **digitalisation**, **environmental sustainability**, **productivity monitoring** and **public acceptance** within their strategic goals.

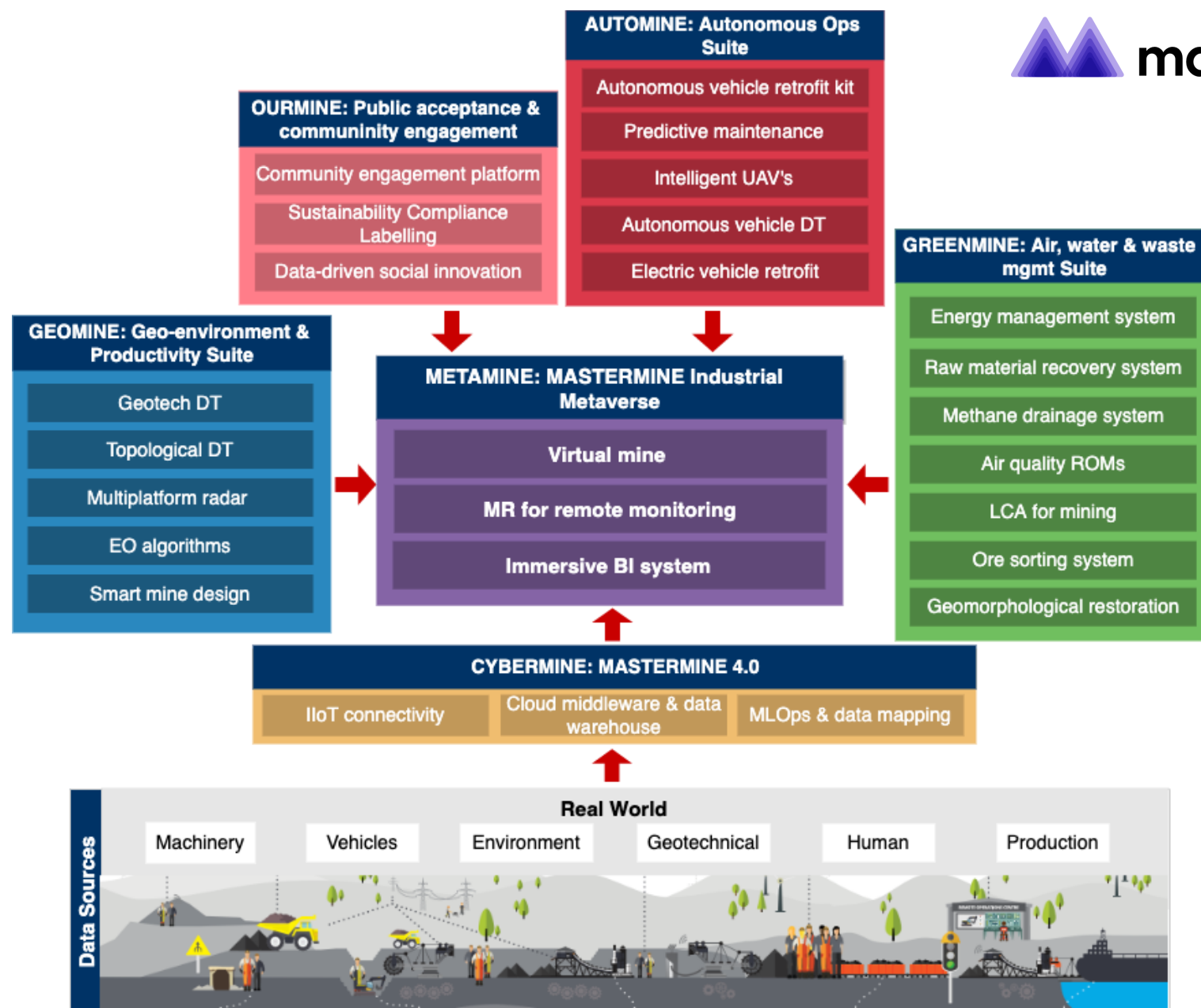


Mastermine and Critical Raw Materials





The Mastermine concept



THARSIS
MINING



JSW SA



TERNA MAG
Terna Group



TAPOJÄRVİ

we are one
Sibanye
Stillwater



The Mastermine platform

CORE IC responsible for the digital transformation of **TERNA MAG** mines in N. Evia, Greece

- What is the current status?
- What data can we use? How do we extract more data?
- What are the challenges due to topology, operations, resistance to change?

Mastermine cloud-based platform using smart sensors, IoT, edge/cloud computing and user-friendly UI

Predictive maintenance for critical assets

Heavy equipment monitoring for preventing failures, vibrations and other issues leading to **downtimes**

Reliability of **dewatering systems** for leakages prevention

Predictive maintenance on critical scaling machine components, ventilators, and **vehicles**





Energy management

Energy Management Systems for high energy consuming equipment, assets and processes to track and analyse **energy usage** to identify areas for improvement in terms of costs and resource optimization

Forecasting of **fuel consumption** in transport vehicles for better planning and more efficient operation



Which is the technology behind this?



All-in-one
Industry 4.0
platform



An interactive
visualisation of your
machines' health.



**Predictive
Maintenance
made simple**



Our own proprietary
waterproof hardware
with sensing and
computing capabilities.

What benefits does it bring?



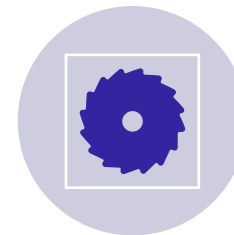
Maintenance &
production cost
minimisation



Reduced planned and
unplanned downtime

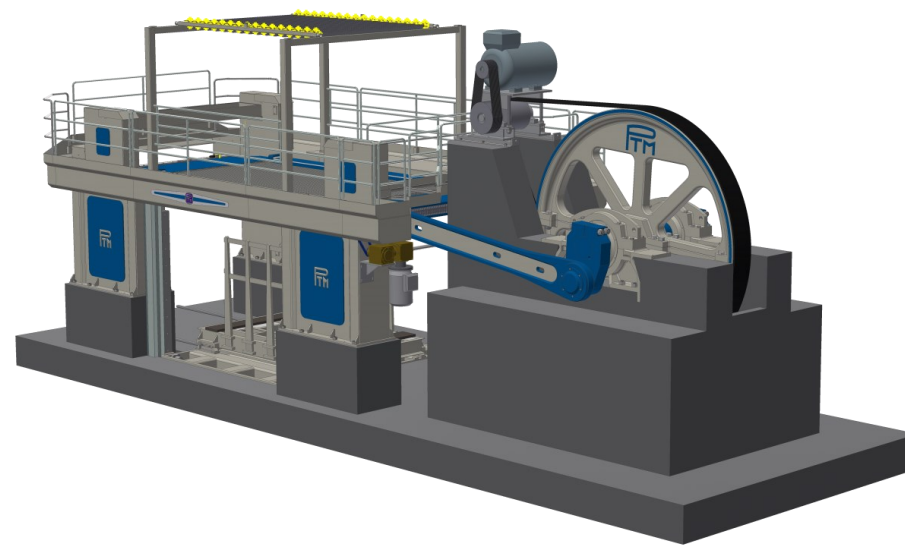


Inventory &
production availability
optimisation



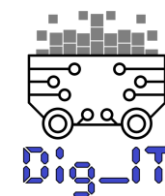
Increased lifespan of
machinery

Real world case studies



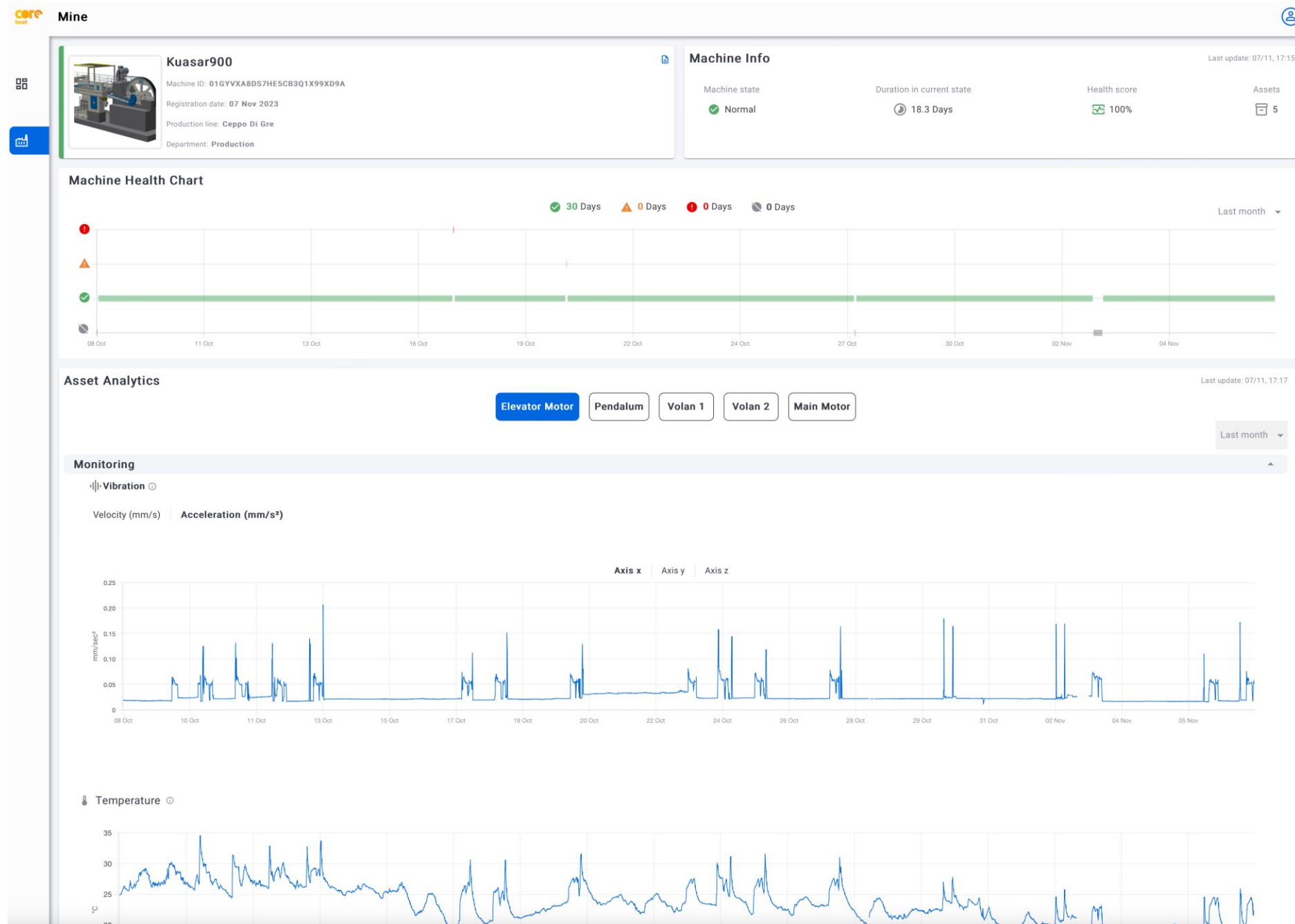
Marini Marmi quarry

Installation of COREbeat on
a Kuasar900 gang saw



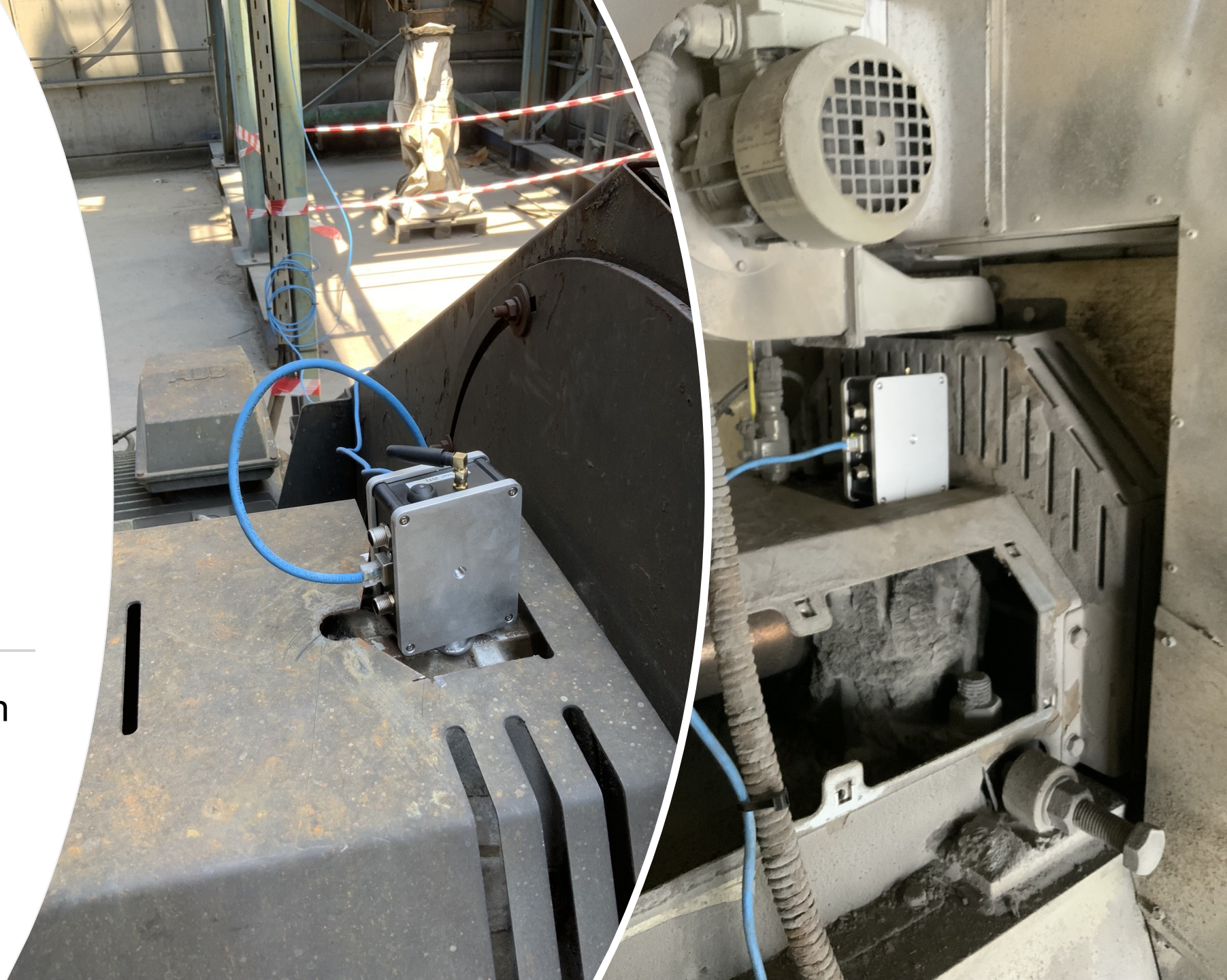


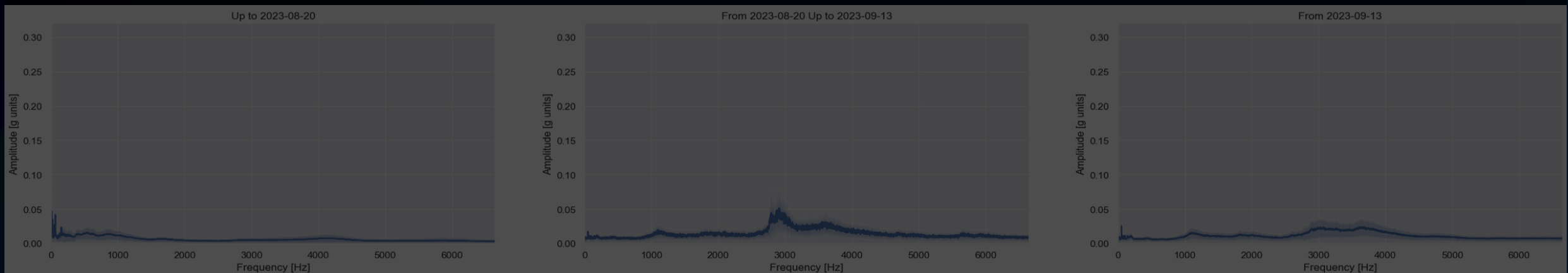
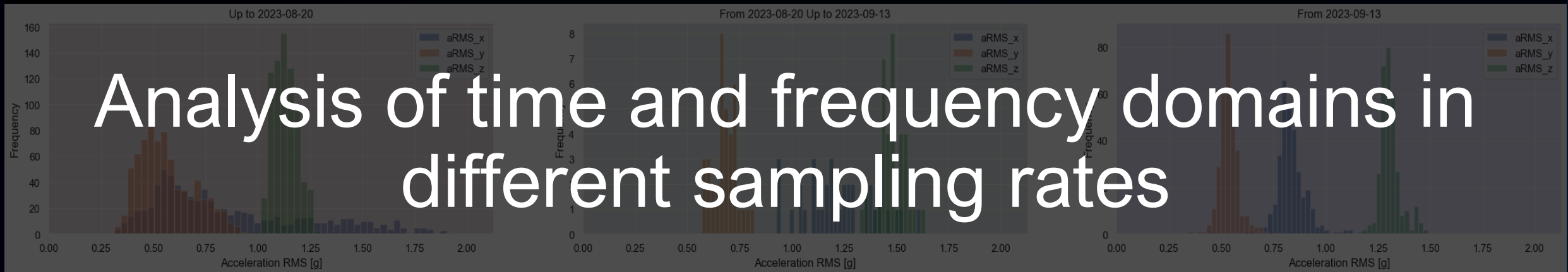
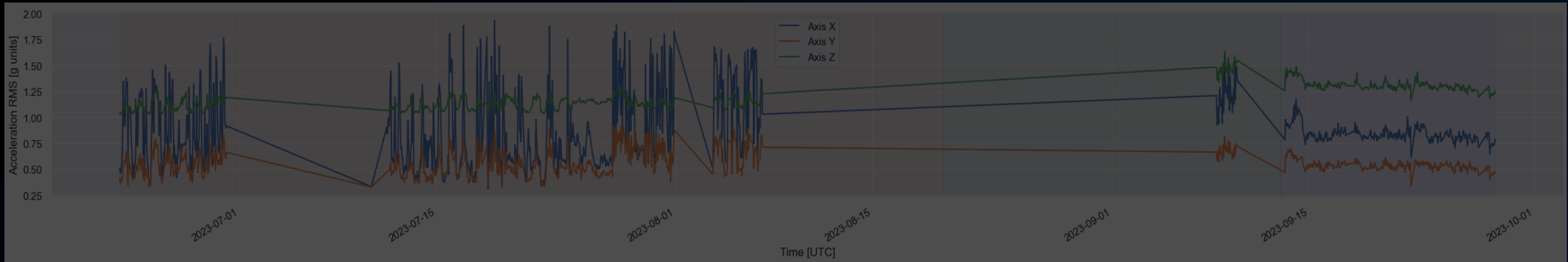
Last month monitoring in gang saw use case



EP.AL.ME. – Aluminium recycling

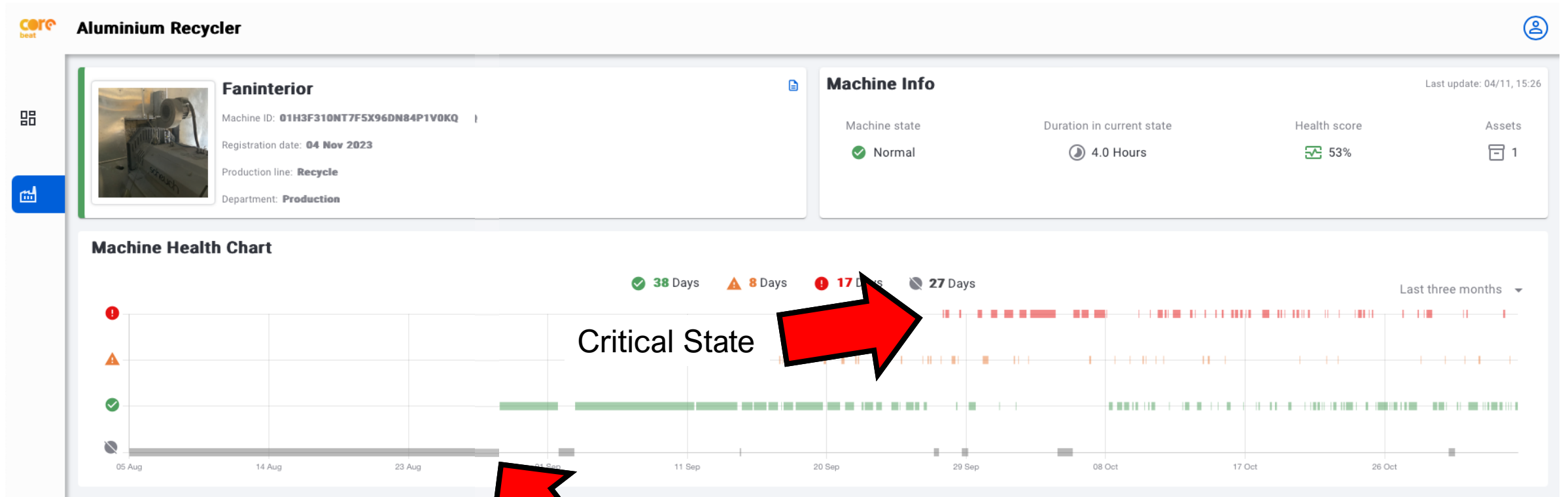
Installation of COREbeat in
2 fan systems





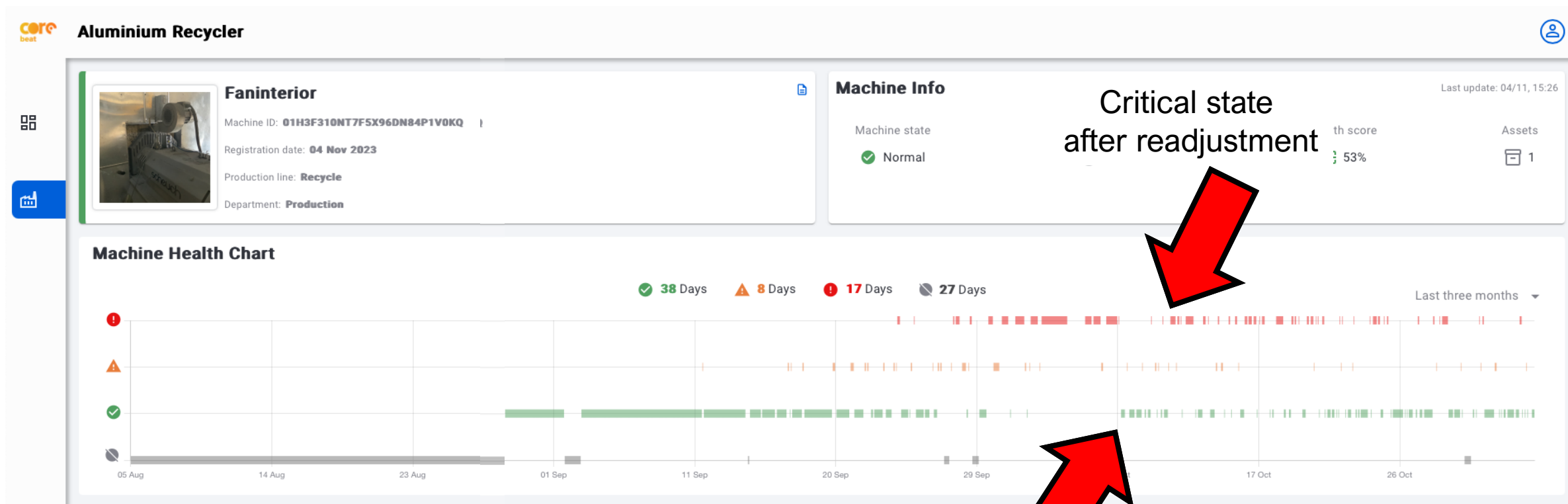


Critical issue revealed





Critical after declared normal

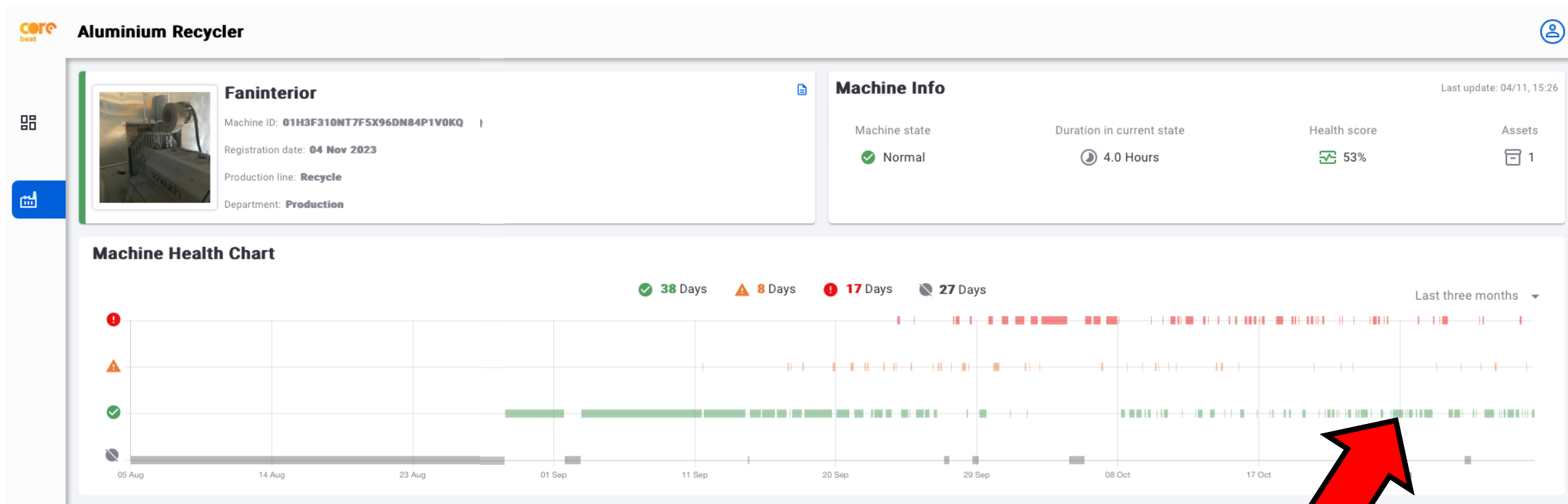


Critical state
after readjustment

Readjustment of model based
on end-user's feedback



Critical after declared normal



User confirms problem

COREbeat always identified the actual state, even
after adjustment



In the landscape of innovation, data is the new gold, and digital transformation is the mine.

Let's harness this wealth to shape the future of mining.



@coreinnovationtech



@CORE_inno



@CORE Group



www.core-innovation.com

44 Solomou str 17343, Athens,
Greece

secretary@core-nnovation.com

+30 2109246730